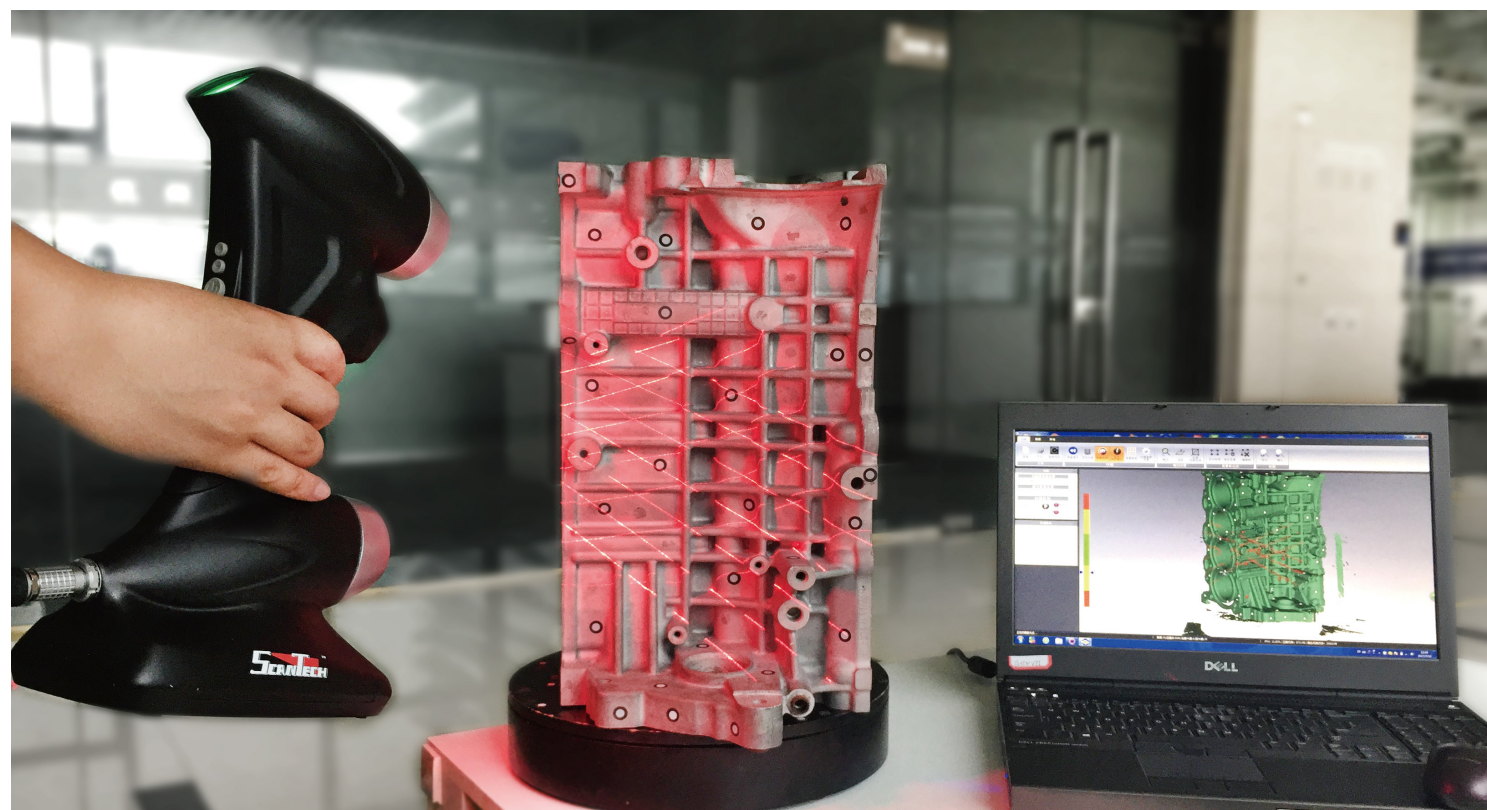


PRINCE Technical Parameter

Type	PRINCE 335		PRINCE 775	
Scan mode	Standard mode R	Hyperfine mode B	Standard mode R	Hyperfine mode B
Laser source	3 red laser crosses (+ 1 extra red laser line)	5 blue parallel laser lines	7 red laser crosses (+ 1 extra red laser line)	5 blue parallel laser lines
Deep hole scanning	Support			
Hyperfine scanning	Support			
Accuracy	0.030 mm			
Camera frame rate	60 fps	120 fps	60 fps	120 fps
Measurement rate	265,000 measurements/s	320,000 measurements/s	480,000 measurements/s	320,000 measurements/s
Scanning area	225 mm × 250 mm	200 mm × 200 mm	275 mm × 250 mm	200 mm × 200 mm
Laser class	CLASS II (eye-safe)			
Resolution	0.050 mm	0.020 mm	0.050 mm	0.020 mm
Volumetric accuracy (without extra device)	0.020 mm + 0.080 mm/m	0.010 mm + 0.080 mm/m	0.020 mm + 0.060 mm/m	0.010 mm + 0.060 mm/m
Volumetric accuracy (with MSCAN)	0.020 mm + 0.025 mm/m	0.010 mm + 0.025 mm/m	0.020 mm + 0.025 mm/m	0.010 mm + 0.025 mm/m
Stand-off distance	300 mm	150 mm	300 mm	150 mm
Depth of field	250 mm	100 mm	250 mm	100 mm
Output formats	.stl, .ply, .obj, .igs, wrl, .xyz, .dae, .fbx, .ma, .asc or customized			
Weight	0.95 kg			
Dimensions	315 × 165 × 105 mm			
Operating temperature range	-10 ~ 40°C			
Interface mode	Gigabit Lan			
Patents	CN204854633U, WO2017028600, CN105068384, WO2017020648, CN204854633U, CN105049664, CN204902785U, CN104501740, CN204944431U, WO2017024869, CN204963812U, CN106403845, WO2018049843, CN106500627, WO2018072434, CN106500628, WO2018072433, CN206132003U, US10309770B2			



Company Introduction

Hangzhou Scantech Co., Ltd. is a high-tech enterprise specialized in developing, manufacturing and selling of intelligent visual inspection equipment. As one of the most professional 3D digital equipment suppliers, ScanTech has been granted and assigned numbers of technological patents.

R&D team developed a series of 3D digital equipment with self-owned intellectual property rights, such as composite 3D scanner, handheld 3D laser scanner, global 3D scanner, color 3D scanner, tracking 3D scanner and global photogrammetry system.

Furthermore, our R&D team has established a joint development center with Norway Metronor which is a well-known optical metrology enterprise in Europe.

All-Round 3D Digital Solution

Scantech 3D measurement system offers professional measurement technology for variety industries.



3D Digital Expert



PRINCE 3D Scanner

Born for Ultra-Detail



SCANTECH (HANGZHOU) CO., LTD
 Building 12, No.998, Wenyi West Road, Yuhang District, Hangzhou,
 Zhejiang Province, 310000 China
 Tel: 0086-571-85852597 Fax: 0086-571-85370381
 E-mail: info@sikantech.com
 Website: www.3d-scantech.com

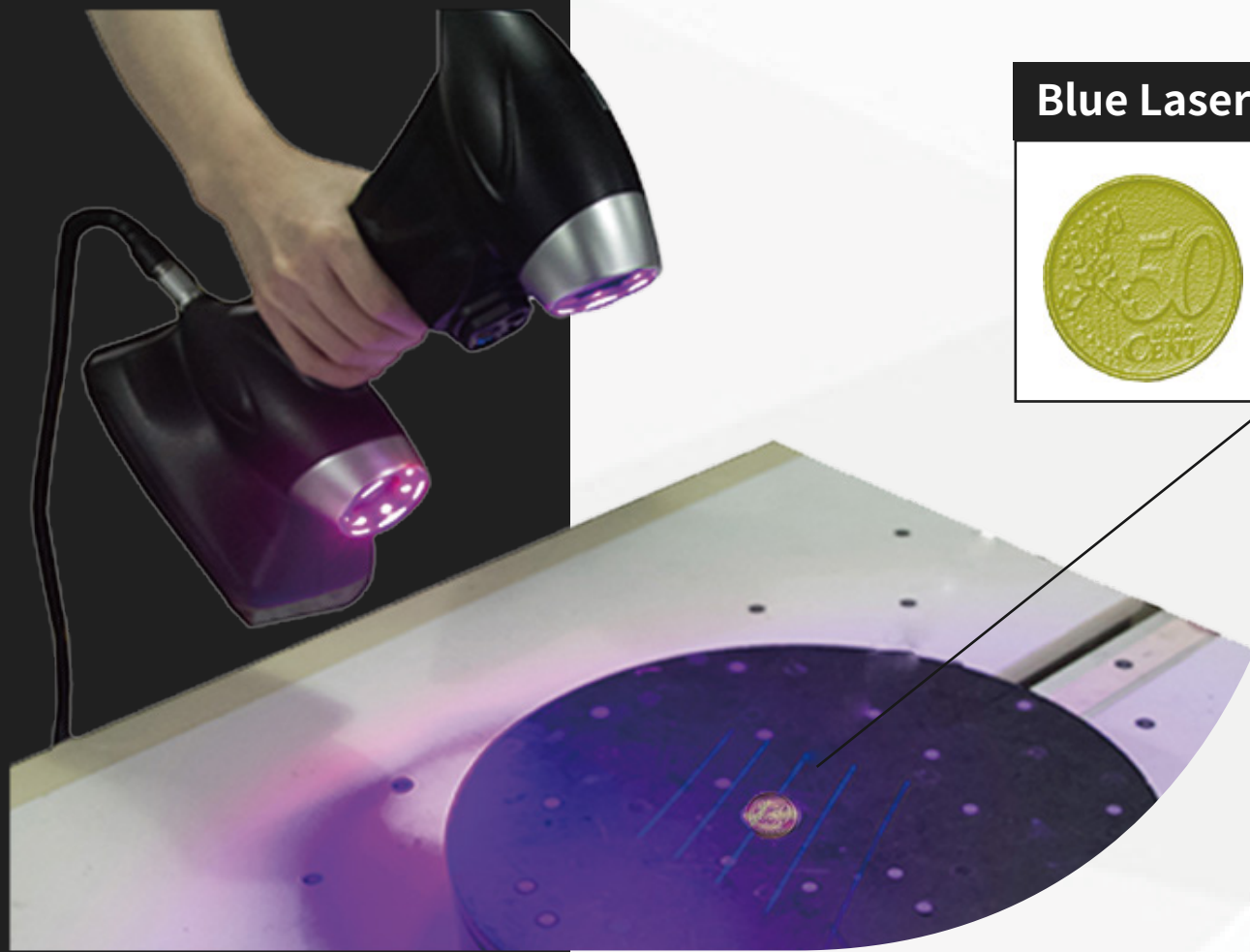
SCANTECH

Authorized Distributor

SCANTECH (HANGZHOU) CO., LTD

Complete Solution For Industrial 3D Measurement

New generation of 3D measurement technology



Blue Laser Scan Mode



Dual Scan Mode

- Red & blue laser scan modes
- Rapidly switch two working modes
- Extreme high detail capturing
- Easy to scan large and small objects

High Precision

- Metrology-grade accuracy up to 0.030 mm
- Accuracy is insensitive to instable environment

High Efficiency

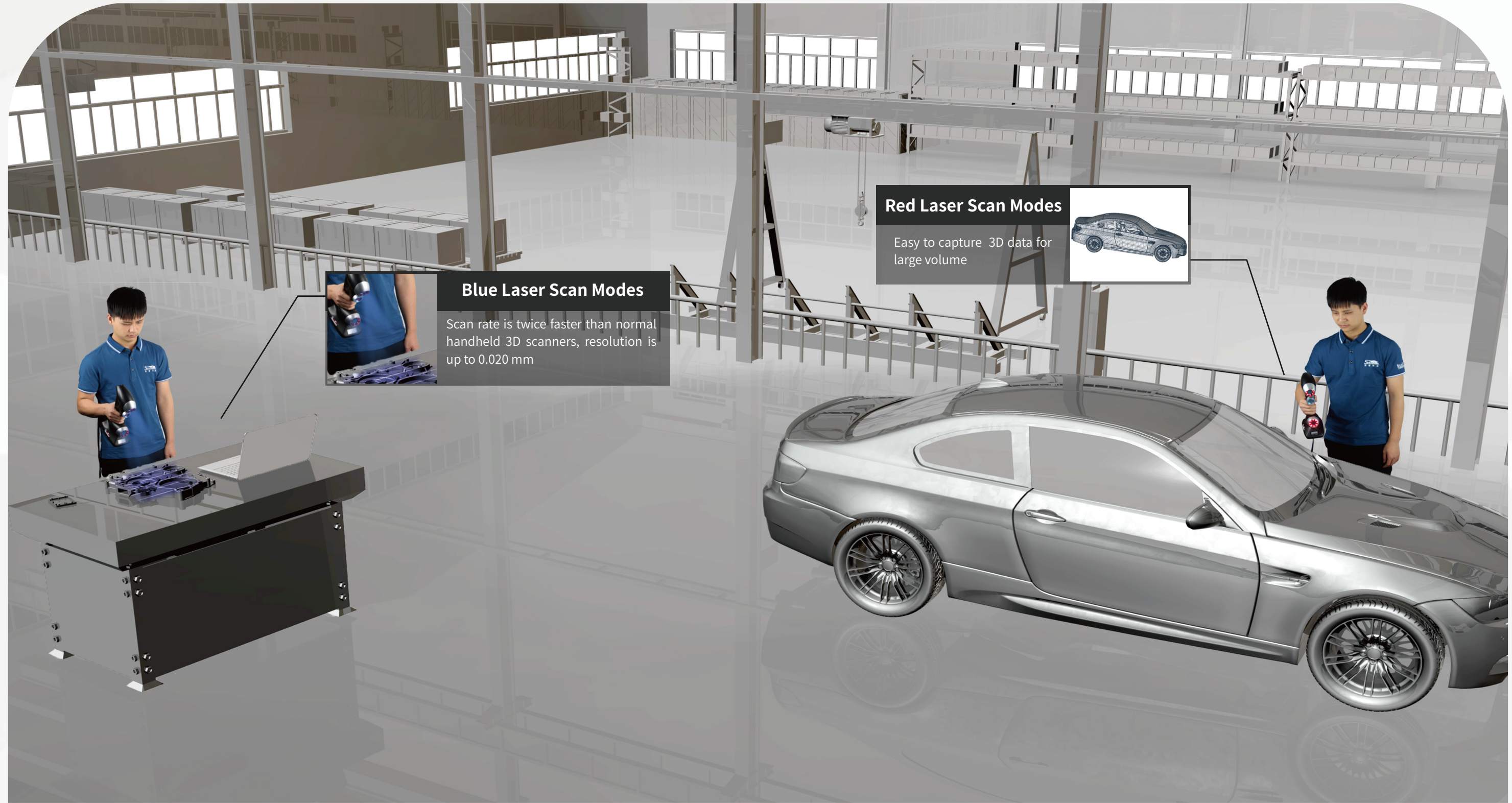
- 3 or 7 red laser crosses
- 5 blue parallel laser lines
- Scan deep hole by single red laser line
- 480,000 measurements/s

Ultra-high Detail

- Resolution up to 0.020 mm
- Equip with 120 fps camera
- Easily scan object smaller than coins

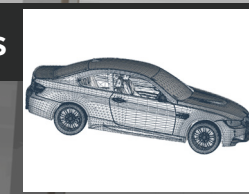
PRINCE

PRINCE 3D scanner with two different working modes. It makes full use of high adaptability of red laser and ultra-detail capture of blue laser, truly performing a perfect combination of easy operation and high detail.



Red Laser Scan Modes

Easy to capture 3D data for large volume



Blue Laser Scan Modes

Scan rate is twice faster than normal handheld 3D scanners, resolution is up to 0.020 mm

