

# Company Introduction

Hangzhou Scantech Co., Ltd. is a high-tech enterprise specialized in developing, manufacturing and selling of intelligent visual inspection equipment. As one of the most professional 3D digital equipment suppliers, ScanTech has been granted and assigned numbers of technological patents.

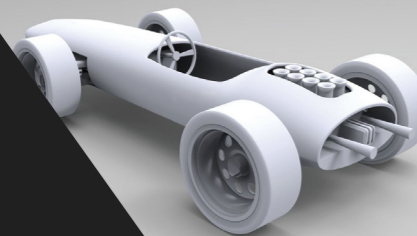
R&D team developed a series of 3D digital equipment with self-owned intellectual property rights, such as composite 3D scanner, handheld 3D laser scanner, global 3D scanner, color 3D scanner, tracking 3D scanner and global photogrammetry system.

Furthermore, our R&D team has established a joint development center with Norway Metronor which is a well-known optical metrology enterprise in Europe.

## All-Round 3D Digital Solution

ScanTech 3D measurement system offers professional measurement technology for various industries.

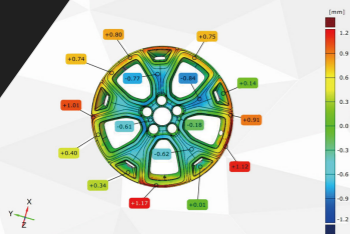
Rapid Prototyping



Reverse Engineering



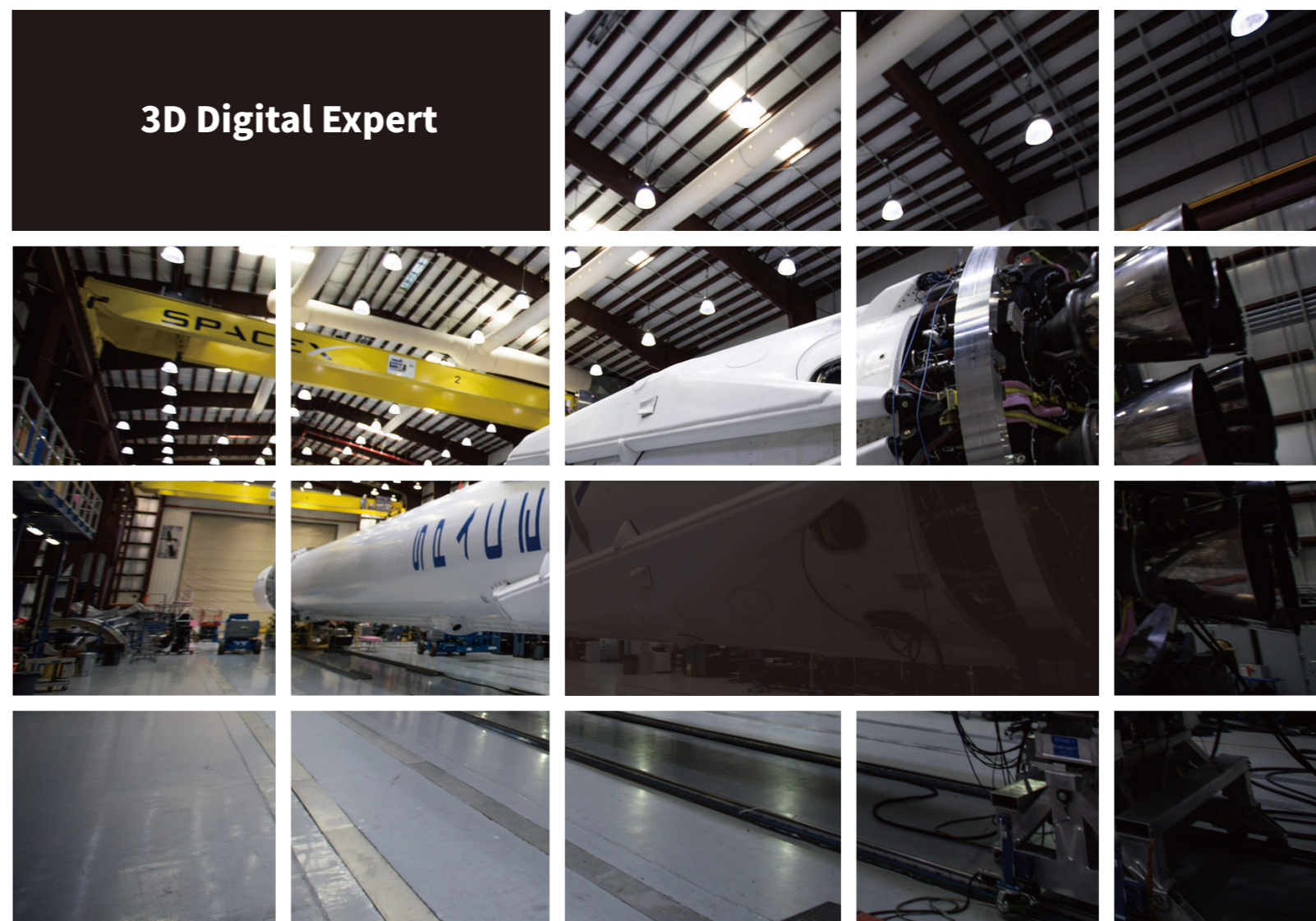
3D Inspection



3D Visualization



## 3D Digital Expert



## AXE-BII 3D Scanner

Premier Choice for Large-scale 3D Measurement

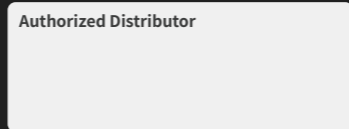


### SCANTECH (HANGZHOU) CO., LTD

Building 12, No.998, Wenyi West Road, Yuhang District, Hangzhou, Zhejiang Province, 310000 China  
 Tel:0086-571-85852597 Fax:0086-571-85370381  
 E-mail : info@sikantech.com  
 Website : www.3d-scantech.com

SCANTECH™

Authorized Distributor



Copyright ©

SCANTECH (HANGZHOU) CO., LTD



## AXE-B11

AXE-B11 3D scanner opens up a new 3D experience to large-scale 3D measurement without extra device.

The 11 crossed blue lasers greatly increase measurement rate to 1,300,000 measurements/s. And the single blue laser line can rapidly obtain 3D data of deep hole and inaccessible positions of complex objects.

The built-in photogrammetry function can scan large-scale objects with ultra-high accuracy individually.

### Accurate Measurement

The built-in photogrammetry system greatly improves the volumetric accuracy up to 0.020 mm/m and accuracy up to 0.020 mm. AXE-B11 offers professional 3D scanning for large-volumes without an extra device.

### Double Scanning Mode

Due to 11 crossed blue lasers + 1 extra blue laser line, AXE-B11 supports high-efficiency mode for large-scale scanning and single line scanning mode to meet special requirements, such as deep hole and dead angle inspection.

### Super-efficiency

The ultra-fast speed facilitates the process of measuring large volume by 1,300,000 measurements/s, saving numerous working time and labor cost. With 550 mm × 600 mm of scan area, it only needs very few markers to finish the scanning.

### Versatile Combination

AXE-B11 fulfills different measurement demands by freely matching with the accurate reference bar, Helpers engineer kit, etc.

Technical Parameter	
Type	AXE-B11
Laser source	11 blue laser crosses + 1 extra blue laser line
Deep hole scanning	Support
Accuracy	0.020 mm
Measurement rate	1,300,000 measurements/s
Scanning area	Up to 550 mm × 600 mm
Scanning area (photogrammetry)	2500 mm × 3000 mm
Laser class	CLASS II (eye-safe)
Resolution	0.025 mm
Volumetric accuracy (without extra device)	0.020 mm + 0.035 mm/m
Stand-off distance	300 mm
Depth of field	500 mm
Depth of field (photogrammetry)	2500 mm
Output formats	.stl, .ply, .obj, .igs, wrl, .xyz, .dae, .fbx, .ma, .asc or customized
Operating temperature range	-10 ~ 40°C
Interface mode	USB 3.0
Patents	CN204902790U,CN206905709U,CN107202554,US10309770B2

