



Geomagic Freeform® 2021

Introducing Geomagic Freeform® 2021

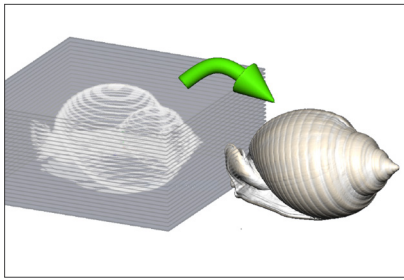


3D design software combined with touch-based haptic devices transform traditional handcraftsmanship into organic, digital design for custom manufacturing. With the new capabilities of Geomagic Freeform 2021, you will benefit from optimized design workflows enabling faster model creation and with more precision, saving both time and money.

- Directly import and convert DICOM file formats
- New design tools for additive and traditional workflows
- Enhancements that improve both automated and manual design processes

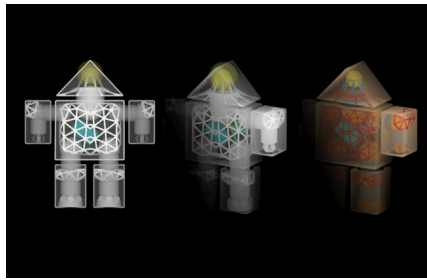
New & Enhanced Features in Geomagic Freeform® 2021

Import DICOM files



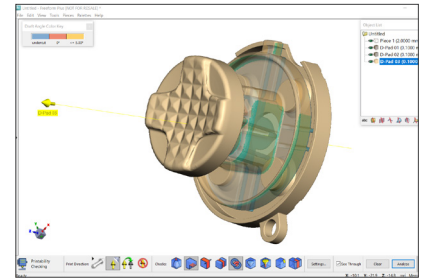
Simplify workflows by importing volumetric data from image stacks directly inside of Freeform Plus and convert the data into voxels and polygons. With the new MultiVox function, data from both medical and industrial CT machines can now be imported, processed, and used for designs all inside a single application.*

New Volume and 2D Slice Views



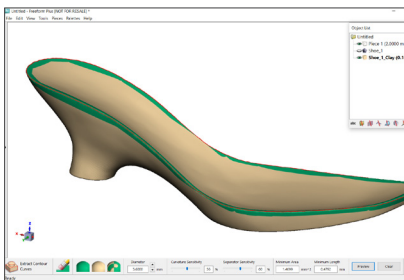
Improve precision and reduce design iterations by verifying internal geometry with the new MultiVox View that controls model transparency per layer, and provides cross-sectional analysis. Before sending models for 3D Printing, designers can check internal clearances and take simple measurements to ensure assembly fit.

New Tools for Modeling and Design



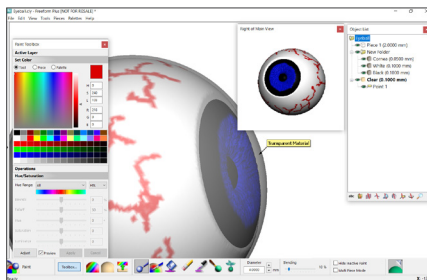
Save modeling time with new design tools like Sharpen Clay, Flatten Clay, and the 3D Printability Check that reduce the time between concept and manufacturing.

New Tools for Curve Workflows



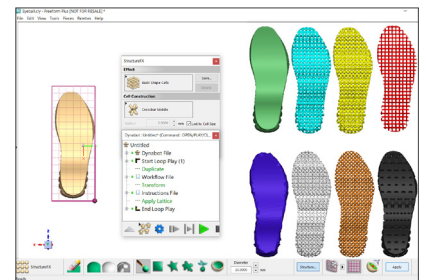
Design workflows using curves are now faster and more efficient with new tools like Extract Contour Curve, Offset Surface, and the enhanced Pattern Axis Marker command. With the new workflows, surfaces can be created faster and patterns can be designed with more precision.

Enhanced Color and Texture Tools



Enabling the pathway for true 3D coloring and texturing, the enhanced Paint tools not only improve current workflows to add rich color to designs, but also enable additive manufacturing of parts with realistic textures and color both on the part surface and the layers underneath.

Automation Enhancements



New enhancements to Dynabot continue to drastically reduce the time to create custom-fitting designs by automating portions of the workflow and improve repeatability with guided routines.

*Geomagic Freeform is not a medical device and 3D System makes no claims that it is intended to treat, plan, or diagnose. However, there is evidence and publicly-available research that indicates many customers are successful using Geomagic Freeform in their own patient-specific solution workflows and are following all local regulatory requirements.



If you're on maintenance

Download Freeform 2021 today at softwaresupport.3dsystems.com



If you're off maintenance

Contact your Geomagic Freeform reseller or visit: 3dsystems.com/how-to-buy

Find out more at: 3dsystems.com/software/geomagic-freeform

Specifications subject to change without notice. 3D Systems, Geomagic and the 3D Systems Logo are trademarks of 3D Systems, Inc. All other trademarks are the property of their respective owners.

Copyright © 3D Systems, Inc. All rights reserved. www.3dsystems.com Geomagic Freeform What's New EN 11/2020